

Desktop Melter

Product Model:

Easy Melt 1G	(0UPT-016-550-01) - Easy Melt - Desktop Melter - 1kg Gold
Easy Melt 2G	(0UPT-016-550-02) - Easy Melt - Desktop Melter - 2kg Gold
Easy Melt 2P	(0UPT-016-550-03) - Easy Melt - Desktop Melter - Steel&Platinum
Easy Melt 1P	(0UPT-016-550-04) - Easy Melt - Desktop Melter - Steel&Platinum

Operation Manual



TABLE OF CONTENTS:

1	GETTING STARTED GUIDE	3
1.1	SAFETY INSTRUCTION	3
1.1.1	IMPORTANT NOTES	3
1.1.2	SAFETY PRECAUTIONS	4
1.1.2.1	ELECTRICAL SHOCK HAZARDS	4
1.1.2.2	GROUNDING	4
1.1.2.3	SAFETY AND PRECAUTION SYMBOLS USED IN THIS MANUAL	5
1.2	INSTALLATION AND START UP	5
1.2.1	INSTALLATION PROCEDURE	5
1.2.2	UNPACKING AND INSPECTION	6
1.2.3	SELECTING THE DEVICE SITE	6
1.2.4	COOLING REQUIREMENTS	6
1.2.5	AC INPUT CONNECTION	7
1.2.6	START-UP	7
1.2.7	USING THE MACHINE	8
1.2	MAINTENANCE	9
1.3.1	SCHEDULING	9
1.3.2	PERSONNEL	9
1.3.3	INSPECTION AND MAINTENANCE PROCEDURE	9
2	PRODUCT SPECIFICATIONS AND FEATURES	10
2.1	POWER SUPPLY SPECIFICATIONS	10
2.1.1	OVERVIEW	10
2.1.2	DEVICE SPECIFICATIONS TABLE	10
2.1.3	CONNECTION DIAGRAM	12
2.1.4	DEVICE SPARE PARTS DIAGRAM	13
2.1.5	ELECTRONIC PLATE ASSEMBLY SPARE PARTS DIAGRAM	15
2.2	HEAT STATION SPECIFICATIONS	16
2.2.1	PRODUCT OVERVIEW	16
2.2.2	HEAT STATION SPECIFICATIONS	16
2.2.3	CHANGING OUTPUT COMPONENTS	16
2.2.3.1	Adjusting the output transformer taps	16
2.2.3.2	Adjusting the tank capacitor value	17
2.3	CONTROLS AND OPERATION	18
2.3.1	CONTROL PANEL OVERVIEW	18
2.3.2	CONTROLS AND INDICATORS	18
2.3.3	REGULATION MODES AND SYSTEM STATUSES	19
2.3.4	MENUS AND NAVIGATION	20
2.3.4.1	Main Menu Navigation	20
2.3.4.2	Heat ON Menu Navigation	21
2.3.4.3	SYSTEM MENU Navigation	22
2.3.4.4	EXTENDED MENU Navigation	23
2.3.5	CONTROL MODES	26
3	TUNING AND TROUBLESHOOTING	26
3.1	LOAD TUNING GUIDE	26
3.2	ALARMS, FAULTS AND WARNINGS	26
3.3	SERVICE	28
3.3.1	GENERAL	28
3.3.2	SERVICE CONTACT INFORMATION	28
Appendix A:	ACCESSORIES	29

1 GETTING STARTED GUIDE

1.1 SAFETY INSTRUCTION

1.1.1 IMPORTANT NOTES

1. This manual is valid only for the Model and the associated Revision number(s) specified in the cover sheet of this manual. A Change Page may be included at the end of the manual. All applicable changes are documented with reference to the equipment Revision and Serial number. Before using this Instruction Manual, check your equipment nameplate to identify your Model and Revision number. If in doubt, contact your nearest Ultraflex Power Technologies (UPT Corp.) Representative;
2. This document contains information proprietary to UPT Corporation. All rights are reserved. No part of this document may be reproduced, transmitted, processed or recorded by any means or form, electronic, mechanical, photographic or otherwise, nor be released to any third party without the express written consent of UPT Corporation;
3. In this document period “.” will be used as a decimal point delimiter.
4. Data subject to change without notice;
5. All Information contained in this manual is the latest information available at the time of printing. The right is reserved to make changes at anytime without notice. UPT Corp. makes no warranty of any kind with regard to this material and assumes no responsibility for any errors that may occur in this manual;
6. Safety First!



YOU AND NOT THIS MANUAL ARE RESPONSIBLE FOR ALL SAFETY PRECAUTIONS

This manual is for reference purposes only. Personnel should be trained on proper operation of this equipment before using. Only authorized personnel may perform any troubleshooting or repair on any UPT manufactured equipment. Failure to comply will void warranty.

Please, contact the UPT Service Department before servicing any UPT equipment.

Lethal voltages may be present in equipment surrounding and/or connected to this equipment. Read the following warnings carefully and study this entire manual before operating the system. Failure to observe warnings may result in equipment damage, serious personal injury, or death.

If the equipment is used in a manner not specified by this manual, the protection provided by the equipment may be compromised and damage to the unit may occur.

1. Only qualified persons who have been trained in the operation of this equipment and are familiar with the technology should be permitted to operate the system;
2. Installation, assembly, inspection maintenance and servicing are to be performed by authorized personnel only;
3. Always have the Power Supply completely powered OFF and locked out before performing any service, inspection or maintenance;

4. Even with the Power Supply OFF, live voltages still exist within the cabinet. Always power OFF and lock out the external power source to ensure no one can accidentally energize it;
5. Ensure that all external wiring conforms to applicable codes;
6. Obey all warnings and use good common sense;

1.1.2 SAFETY PRECAUTIONS

1.1.2.1 ELECTRICAL SHOCK HAZARDS

This manual is written for personnel familiar with the technology pertaining to the operation of induction heating equipment. Such personnel should be thoroughly familiar with the hazards associated with this equipment and electrical equipment in general, and they should have received proper safety procedure training.

Hazardous voltages are present within this product during normal operation. The product should never be operated with the cover removed unless equivalent protection of the operator from accidental contact with hazardous internal voltages is provided. Operators must be trained in its use and exercise caution as well as common sense during use to prevent accidental shock.



THERE ARE NO OPERATOR SERVICEABLE PARTS OR ADJUSTMENTS WITHIN THE PRODUCT ENCLOSURE. REFER ALL SERVICING TO TRAINED SERVICE TECHNICIAN.



SOURCE POWER MUST BE REMOVED FROM THE PRODUCT PRIOR TO PERFORMING ANY SERVICING.



THIS PRODUCT IS DESIGNED FOR USE WITH NOMINAL A-C MAINS VOLTAGES INDICATED ON THE RATING NAMEPLATE.

1.1.2.2 GROUNDING

This product is a Class 1 device which utilizes protective grounding to earth to ensure operator's safety.



PROTECTIVE EARTHING CONDUCTOR TERMINAL -This symbol indicates the point on the product to which the protective grounding conductor must be attached.



EARTH (GROUND) TERMINAL -This symbol is used to indicate a point which is connected to the PROTECTIVE EARTHING TERMINAL. The component installer/assembler must ensure that this point is connected to the PROTECTIVE EARTHING TERMINAL.



CHASSIS TERMINAL -This symbol indicates frame (chassis) connection, which is supplied as a point of convenience for performance purposes. This is not to be confused with the protective grounding point, and may not be used in place of it.

1.1.2.3 SAFETY AND PRECAUTION SYMBOLS USED IN THIS MANUAL



A **WARNING** symbol alerts you to a hazard that may result in equipment damage, personal injury, or death. Carefully read the instructions provided WARNING and follow all safety precautions.



A **CAUTION** symbol alerts you that the system may not operate as expected if instructions are not followed.

1.2 INSTALLATION AND START UP

1.2.1 INSTALLATION PROCEDURE

The installation procedure consists of the following steps:

- Unpacking the equipment;
- Selecting the site where the equipment will be used;
- Connecting the Heat Station (if remote Heat Station is provided);
- Connecting accessories or interfacing the system with other controls (if necessary);
- Completing the Power and Ground/Earth connections.



POWER AND GROUND/EARTH CONNECTIONS MUST BE MADE LAST. FAILURE TO DO SO WILL CREATE A HAZARDOUS CONDITION THAT MAY RESULT IN EQUIPMENT DAMAGE, PERSONAL INJURY, OR DEATH.

NOTE: UPT Corporation has a staff of field engineers who are available to supervise the installation of the equipment. If installation service is required, contact our Technical Service Department for additional information.

Provisions for facility electrical power service are customer furnished. Requesting field engineering assistance before customer furnished provisions are installed at the equipment site could delay equipment installation and cause unnecessary expense.

1.2.2 UNPACKING AND INSPECTION

This equipment has been thoroughly inspected and tested prior to packing and is ready for operation. After careful unpacking, visually inspect for shipping damage **BEFORE** attempting to operate. If any indication of damage is found, file an immediate claim with the responsible transport service and advise your sales representative.



INSPECT EQUIPMENT BEFORE INSTALLING. DAMAGED EQUIPMENT MAY RESULT IN IMPROPER OPERATION AND CREATE A HAZARDOUS CONDITION RESULTING IN PERSONAL INJURY OR DEATH.



THE CARRIER IS RESPONSIBLE FOR ALL DAMAGE CAUSED IN SHIPMENT INCLUDING CONCEALED DAMAGE.

1.2.3 SELECTING THE DEVICE SITE

Consider the following when choosing a location for the device:

- Make sure the system is installed in a debris free zone;
- The device has to be connected to a power source and cooling water;
- The device have to be connected to cooling system with sufficient water flow;
- Make sure the device is easily accessible by the operator;
- Device has to be seated on a mechanically secure surface;

1.2.4 COOLING REQUIREMENTS

The power transistors and rectifiers into the device are maintained within their safe operating temperature range by means of water cooling. The fan inlets must be kept clean from obstructions in order to insure proper air circulation. If installed in confined spaces, care must be taken that the ambient temperature (the temperature of the space immediately surrounding the device, does not rise above the limit specified as 40°C. Periodic cleaning of the device exterior is recommended. The following system components are directly dependent on water cooling:

semiconductor's heat sinks, coils, tank capacitors, output transformers. To maintain the temperature on these components within safe limits, the following requirements apply to the inlet cooling water:

- Maximum allowable temperature – 95°F (35°C);
- Minimum allowable temperature - 58°F (14°C) (to avoid condensation);
- Minimum water flow is required – Refer to product specifications in **Section 2**;
- Water (coolant) must be mechanically debris free;
- Water (coolant) must be chemically pure (distilled water is recommended);

1.2.5 AC INPUT CONNECTION

The Power supply connects to the power network through a 6 ft (1.80m), power cord (supplied). Additional fuse or circuit breaker and residual current circuit breaker on that power branch is a good choice since it will provide extra protection in addition to the unit's internal protection. A mechanical switch is also recommended within the operator's range and vision and possibly closer to the Power Supply.

Only trained personnel should open the unit cover and operate the breakers.

Table 1.1: Wiring Color Code

Color	1-Phase Connection	3-Phase Connection
Brown	Line 1	
Blue	Neutral	
Green/Yellow	Ground/Earth	



INSPECT EQUIPMENT BEFORE INSTALLING. DAMAGED EQUIPMENT MAY RESULT IN IMPROPER OPERATION AND CREATE A HAZARDOUS CONDITION RESULTING IN PERSONAL INJURY OR DEATH.



THE CARRIER IS RESPONSIBLE FOR ALL DAMAGE CAUSED IN SHIPMENT INCLUDING CONCEALED DAMAGE.



NOTE: LOCAL CODES MAY HAVE STRINGENT REQUIREMENTS. IT IS THE CUSTOMER'S RESPONSIBILITY TO BE FAMILIAR WITH AND TO COMPLY WITH ALL APPLICABLE CODES CONCERNING CONDUCTOR RATINGS AND WIRING PROCEDURES. AN ELECTRICIAN FAMILIAR WITH THE LOCAL REGULATIONS SHOULD DETERMINE PROPER WIRING CONNECTIONS.

1.2.6 START-UP

1. Connect the AC and ground connections as described in Section 1.2.5;
2. Connect the water cooling system to the device;

3. Turn the water Cooling System ON. Make sure there is no water leaks on outside connections;
4. Turn the Power Switch on to power the system. Check for any Fault or Alarm messages. If the status screen shows "80% Power" message, then the system is ready for operation.

See Section 2 of this Manual for Connections Diagrams.

1.2.7 USING THE MACHINE

1. Using a water hose connect the machine to the water source for the cooling. In the back of the machine you will find the connections: water in (fig. 2.2-3) and water out (fig. 2.2-1). The connection to a water tap is enough, but the used water will be thrown away. A connection to a water tank with a circulating pump is also possible as well as to a chiller with controlled temperature. Remember to tight strongly the hose on the connections with a clamp;
2. Connect the machine to the electric supply 220 V – single phase;
3. Crucible. Check that your crucible is good enough to make a melting. A too much used crucible can make the casting very slow. Check also that the bottom is not too thin, you risk that it brakes during the melting causing the metal going out;
4. Place the crucible in the melting chamber paying attention to the thermocouple positioned on the bottom. The purpose of the thermocouple is to read the temperature of the crucible. For this reason the crucible has a hole underneath to let the thermocouple to touch the graphite;
5. Switch on the machine pressing the main switch (fig. 2.2-5) positioned on the back of the machine;
6. On the control panel you have the possibility to adjust three parameters;
7. Power efficiency. This parameter determinate how fast the melting will be done. We suggest to use 100 % power;
8. Time. This timer will start to count the set time when the furnace will reach the set temperature. It is going from 1 to 30 minutes. At the end of the time a buzzer will ring for a half second, then the furnace will stop to heat. The purpose of this timer is to let the metal to be completely molten and mixed after the heating. If you don't like to use the timer, set it in "OFF" position;
9. Temperature. Set the melting temperature, the maximum suitable value is 1,300 °C;
10. Choice of parameters. In order to choose the parameters push the "SELECT" (fig. 2.7-10) button. The red light (fig. 2.7-6,7 and 8) will move to the parameter you want to modify. With the help of the arrows (fig. 2.7-9) you can increase or decrease the value till when you will find the desired value by checking on the display (fig 2.7-5);
11. Melting. Put the metal in the crucible and push the "START" (fig. 2.7-2) button;
12. In case you want to stop the machine push the "STOP" button (fig. 2.7-1);
13. If something is wrong the machine will go in "ALARM" and the red light (fig. 2.7-3) will go on;
14. The heating will start the light (fig. 2.7-4) will go on and the machine will heat according to the set power. It is possible to increase or decrease the power during the melting process by pressing the power button previously selected by the "SELECT" (fig. 2.7-10) button. During the cycle on the display (fig. 2.7-5) you will be monitoring the temperature.

1.2 MAINTENANCE

1.3.1 SCHEDULING

The Power Supply is designed for continuous service and minimum maintenance requirements. The frequency of any maintenance program is a function of environment, degree of equipment use, and product experience.

1.3.2 PERSONNEL

Qualified personnel must perform inspection and maintenance procedures only. Personnel must read and be thoroughly familiar with all safety precautions discussed in this manual.

1.3.3 INSPECTION AND MAINTENANCE PROCEDURE

Note: Always follow approved lock-out / tag-out procedures before performing any service, inspection or maintenance.

The following describes inspection procedures to be performed on a daily, weekly, and monthly basis.

Daily/Weekly Inspection: It is good practice to do a quick visual inspection of the unit, wiring and connections on a daily and/or weekly basis. Report any apparent changes in performance to responsible personnel so that potential problems can be investigated.

Monthly Inspection:

Perform the following on a monthly basis:

1. Ensure all wiring connections are secure. Visually inspect for any wear on cabling;
2. Verify that none of the enclosure's hardware has become loose;
3. Remove any build-up debris that may occur around the fan inlet using a cloth or a vacuum cleaner. Use of compressed air is not recommended;
4. Check the water (coolant) for mechanical debris or impurities. The water should be kept clean;
5. Wipe the Control Panel with a damp cloth to remove any dirt, prints or smudges;
6. Wipe the enclosure down with a damp cloth or paint friendly cleaner, if desired;
7. Unbolt water filter clean it and bolt carefully again.

2 PRODUCT SPECIFICATIONS AND FEATURES

2.1 POWER SUPPLY SPECIFICATIONS

2.1.1 OVERVIEW

The UPT-016-550-01/02/03/04 is a general purpose induction heating system designed to work with a large variety of custom coils. It consists of two main parts placed into the same cabinet. They are:

1. Power supply – generates RF power to supply the output circuit.
2. Heat Station – houses the output circuit and interfaces it with the load by means of an induction coil.

The unit is digitally controlled through a control panel located on front panel.

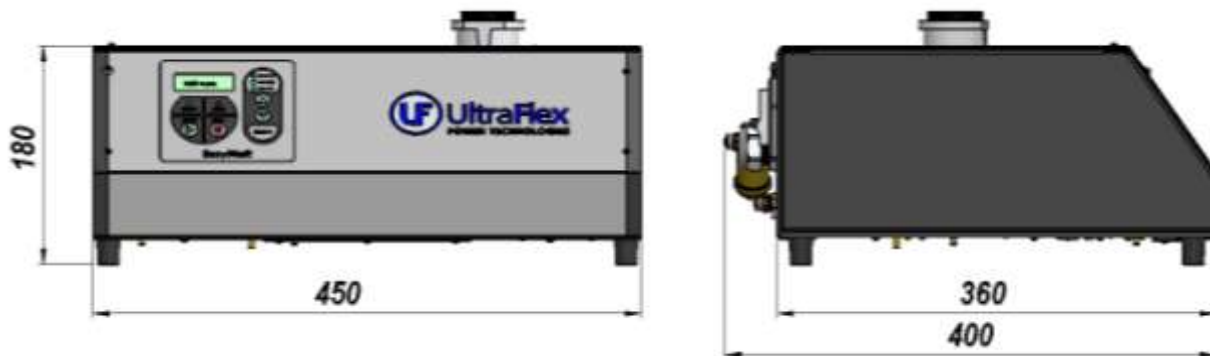


Figure 2.1 Overall Device Dimensions (in mm)

Notes:

- 1) A tool is required to gain access to the Power Supply. This is to prevent accidental exposure to the internal high voltages.
- 2) See section 3 of this Manual for optional equipment and Accessories.

2.1.2 DEVICE SPECIFICATIONS TABLE

Table 2.1 UPT- Easy Melt Specifications Table

SPECIFICATIONS	RATING/DESCRIPTION				CONDITION
	UPT-016-550-01	UPT-016-550-02	UPT-016-550-03	UPT-016-550-04	
INPUT					
AC Voltage range	230 VAC (±10%)				Single Phase
Line Frequency	50/60 Hz				
Input Current maximum (RMS)	21.0 A				@ 230 VAC -10%

Input Power maximum	4.3 kVA				@ 230 VAC
Efficiency minimum	88%				@ full load
OUTPUT					
Control Modes	Constant Power				with voltage and current limit
Output Current maximum	15 A (sine wave)				@ 100% current reference
Output Voltage maximum	250V RMS				@ 230 VAC ±10% Input
Output Power maximum	2.8kW				@ 230 VAC Input
Output Frequency range	57KHz	47KHz	63kHz	90kHz	No load
	65KHz	56KHz	63KHz	90KHz	With empty crucible
	72KHz	65KHz	73KHz	105KHz	With full crucible
Timer Resolution	1min/step				1 – 30 min.
PROTECTION					
Over-current	20 A (RMS)				Inverter output current
Over-temperature heat sink	55°C				Reset by depressing STOP
MISCELLANEOUS					
Temperature Ranges	32°F (0°C) to + 104°F (40°C)				Operating
	-4°F (-20°C) to + 150°F (65°C)				Storage
Humidity range	0 to 95%				RH Non-condensing Operating &Storage
PHYSICAL					
Cooling	Forced water				0.5GPM (2 LPM) minimum water flow
Module Dimensions	W x D x H in/(mm) 17.7 x 14.2 x 7.1 (450 x 360 x 180)				Overall dimensions with feet
Weight	38 lb (18 kg)				Net weight

2.1.3 CONNECTION DIAGRAM

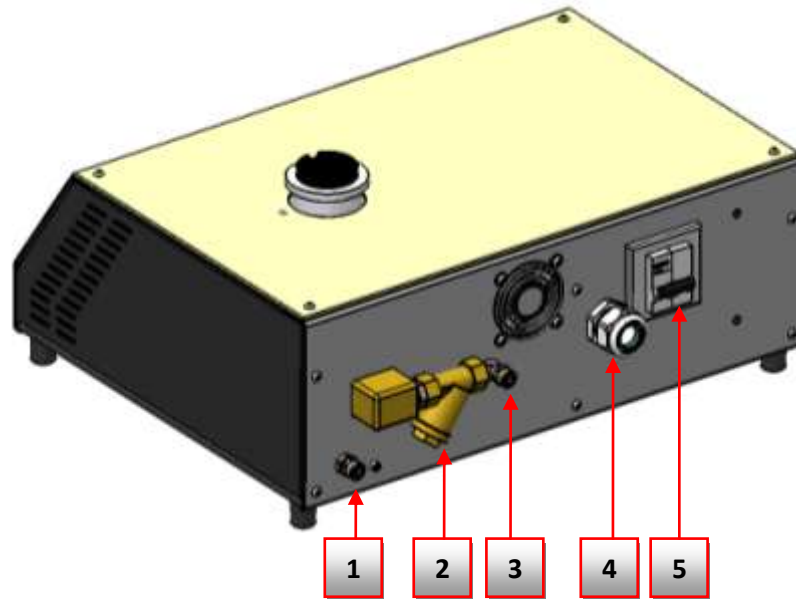


Figure 2.2 **Rear Panel Connections**

Table 2.2 **Rear Panel Connections Table**

No	Description
1	Water outlet
2	Water filter
3	Water inlet
4	Power line cable
5	Power line switch

2.1.4 DEVICE SPARE PARTS DIAGRAM

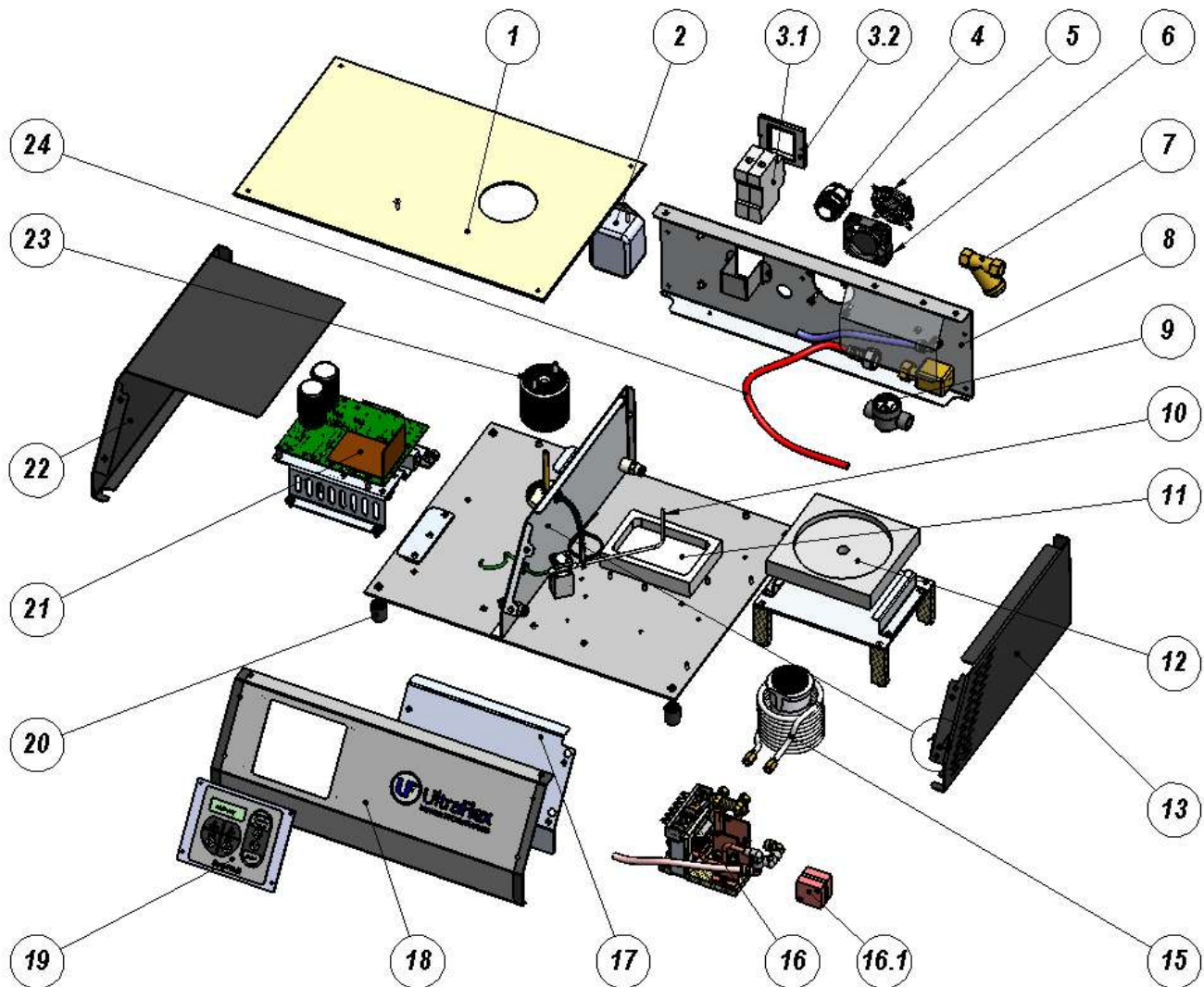


Figure 2.3 Easy Melt Device Expanded View

Table 2.3 Device Spare Parts List Table

№	Name	Part Number				Rev.	Qty
		UPT-016-550-01	UPT-016-550-02	UPT-016-550-03	UPT-016-550-04		
1	Refractory Protective Cover, Cogetherm	2DET-016-550-KQ				B00	1
2	Line Filter	3FTM-000-007-00				-	1
3.1	Fuse, Circuit breaker	3FFT-254-003-003				-	1
3.2	Frame for 2 Fuses, decorative	3FFM-000-027-00				-	1
4	Feedthrough, M20, black	4KVT-000-021-00				-	1

5	Finger Guard	3FAM-000-004-00				-	1
6	Fan, Brushless 60x60x15	3FAN-012-002-00				-	1
7	Water Filter	9VLO-000-125-00				-	1
8	Back Cover	2MAS-016-550-AG				B00	1
9	Flow sensor	9VLO-000-054-00				-	1
10	Sensor, Thermocouple K	3SNM-000-013-00	N/A			-	1/0
	Cover thermocouple	2DET-016-550-KZ				A00	1/0
	Base thermocouple	2DET-016-550-KY				B00	1/0
11	Collecting tray	2DET-016-550-AT				B00	1
12	Thermal base	2DET-016-550-KL				A03	1
13	Left Side Cover	2MAS-016-550-AE				B00	1
14	Middle wall	2MAS-016-550-AI				B00	
15	Induction Coil	1ASM-016-551-00	1ASM-016-552-00	1ASM-016-553-00	1ASM-016-554-00	A00	1
16	Output Transformer Assembly	2MAS-016-550-EM				A00	1
16.1	Tank Capacitor, Celest CSP120 , 1.2μF	3CFM-105-001-01				-	1
17	Protection inductor	2MAS-016-550-OQ				A00	1
18	Front Panel Easy Melt-SS	2MAS-016-550-EK				B00	1
19	Control panel assembly	1ASM-016-540-00				A00	1
19.1	Desktop Melter Control Panel	1MOD-016-600-00				A01	1
19.2	Keyboard Membrane 5 buttons, Desktop Melter	3EPN-016-001-00				-	1
20	Door Buffer (Spacer, Rubber)	4HVM-000-017-00				-	4
21	Electronic plate assembly	2MAS-016-550-CA				A00	1
22	Right Side Cover	2MAS-016-550-AD				B00	1
23	Inductor, Choke, 470uH, 21A	5MIT-471-001-00				-	1
24	Pipe d8/6mm, flexible polyamide	9VLO-000-148-00				-	1

2.1.5 ELECTRONIC PLATE ASSEMBLY SPARE PARTS DIAGRAM

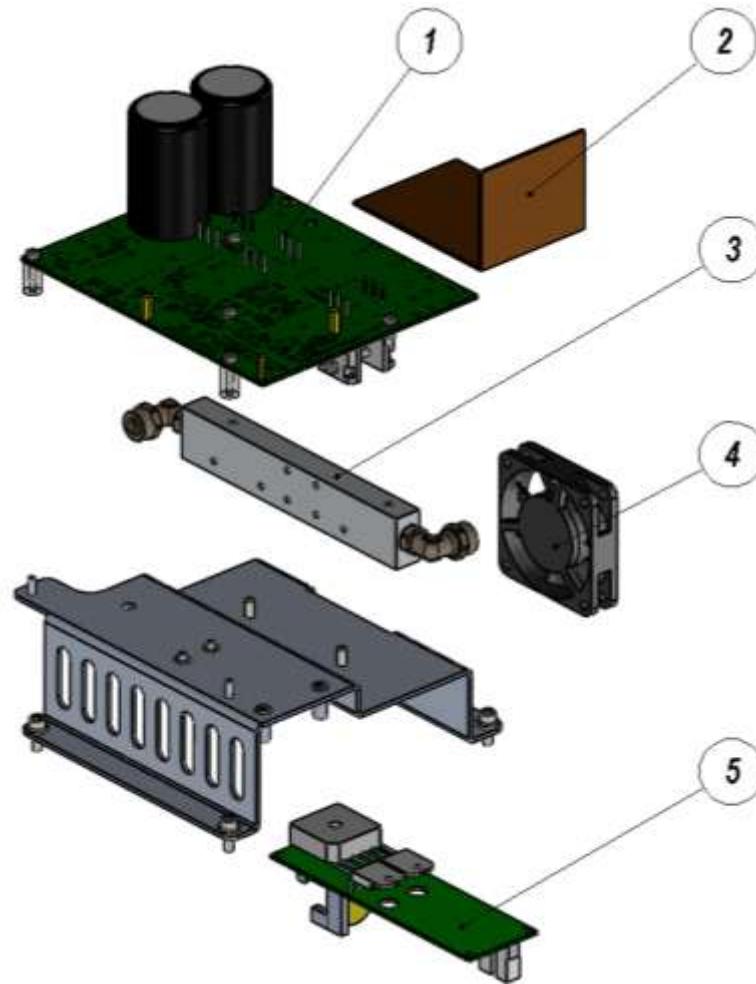


Figure 2.4 *Electronic Plate Assembly Expanded View*

Table 2.4 **Device Spare Parts List Table**

No	Name		Part Number		Rev.	Qty
	UPT-016-550-01/02	UPT-016-550-03/04	UPT-016-550-01/02	UPT-016-550-03/04		
1	Inverter Board		1MOD-021-200-00		A12	1
2	Universal Control board		1MOD-021-701-00		A11	1
3	Water heat sink for 1MOD-021-200-00		2DET-021-200-HV		A00	1
4	Fan, brushless		3FAN-012-002-00		-	1
5	Rectifier/Inrush limiter Board		1MOD-021-500-00		C20	1
6	Pipe d8/6mm, flexible polyamide		9VLO-000-148-00		-	

2.2 HEAT STATION SPECIFICATIONS

2.2.1 PRODUCT OVERVIEW

Heat Station – It is a part of the device placed into the same cabinet with HF power supply. It houses the output circuit and interfaces it with the load by means of an induction coil.

The Heat station consists of an output matching transformer fixed transformer ratio, air cooled tank capacitor assembly for Easy Melt 1 and Easy Melt 2, and water cooled tank capacitor assembly for Easy Melt 1SP and Easy Melt 2SP; and Output terminals for mounting the coil and induction coil.

2.2.2 HEAT STATION SPECIFICATIONS

Table 2.5 Heat Station Specifications Table

ELECTRO-MECHANICAL SPECIFICATIONS					
SPECIFICATIONS	RATING/DESCRIPTION				CONDITION
	UPT-016-550-01	UPT-016-550-02	UPT-016-550-03	UPT-016-550-04	
Cooling minimum	Water cooled 2.0 LPM (0.53GPM)				Minimum required flow rate
Max output Primary Current RMS I_{pmax}	15 ARMS				
Output Frequency Range	57KHz	47KHz	63kHz	90kHz	No load
	65KHz	56KHz	63KHz	90KHz	With empty crucible
	72KHz	65KHz	73KHz	105KHz	With full crucible
Output Volts RMS V_{omax}	250VRMS				
Output Transformer Ratio N_{tr}	8:1		11:1	16:1	Suitable
Tank Capacitor, Celeem, CSP 120 type	1.2 μ F				

2.2.3 CHANGING OUTPUT COMPONENTS



WARNING: ALWAYS ENSURE THAT THE POWER SUPPLY'S CIRCUIT BREAKER IS TURNED OFF WHEN ADJUSTING HEAT STATION COMPONENTS.

2.2.3.1 Adjusting the output transformer taps

The diagrams and the procedure below describe how to adjust the output transformer ratio to match the load.

- Loosen the screws of the jumpers (shunts);
- Select the desired base ratio from the diagram below and position the jumpers;
- Move the primary wires to the contacts denoted with a circle.

d) Tighten the screws, jumpers and the primary wires.

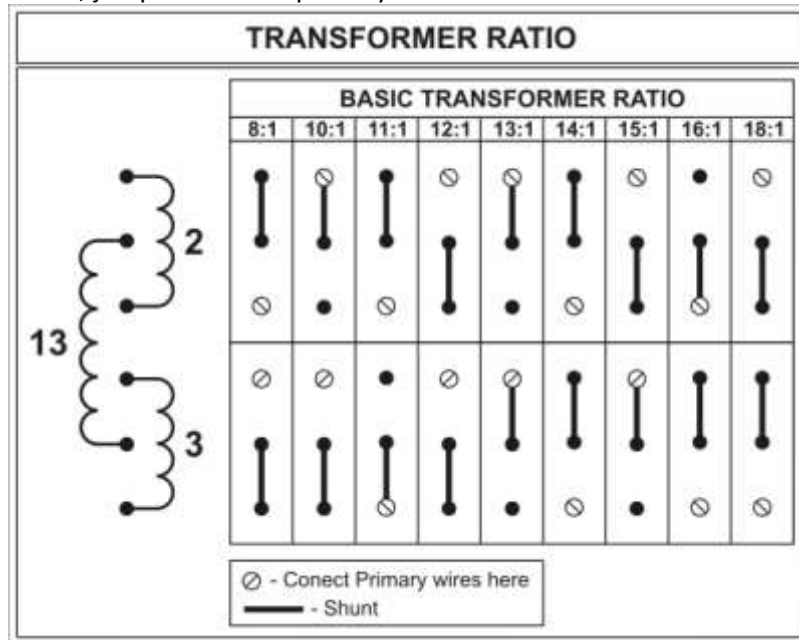


Figure 2.5 Output Transformer Taps Configuration

2.2.3.2 Adjusting the tank capacitor value

The system is provided with a set of two or one tank capacitors, different types.

To tune the system to the load coil and the load, you may need to change these capacitor values. You can request additional capacitor values from the factory.

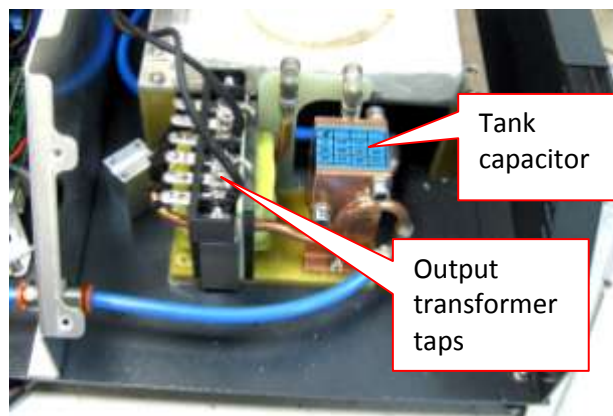


Figure 2.6 Tank Capacitor Position in HS-4-A

To change the capacitors:

Loosen the screws attaching the capacitor to the cooling plates.

1. Remove the capacitor carefully by sliding them up.
2. Insert the new capacitor from the top aligning it with the mounting holes.

3. Place and tighten the mounting screws.

2.3 CONTROLS AND OPERATION

2.3.1 CONTROL PANEL OVERVIEW

The unit is digitally controlled through a control panel located on the front panel of device. The control panel utilizes the latest microprocessor technology. The control panels are designed to display vital parameters and alpha-numeric messages providing intuitive and informative visual feedback. The users can also navigate through easy to use service, diagnostics and setup menus.

2.3.2 CONTROLS AND INDICATORS

The control panel has the following controls and indicators:

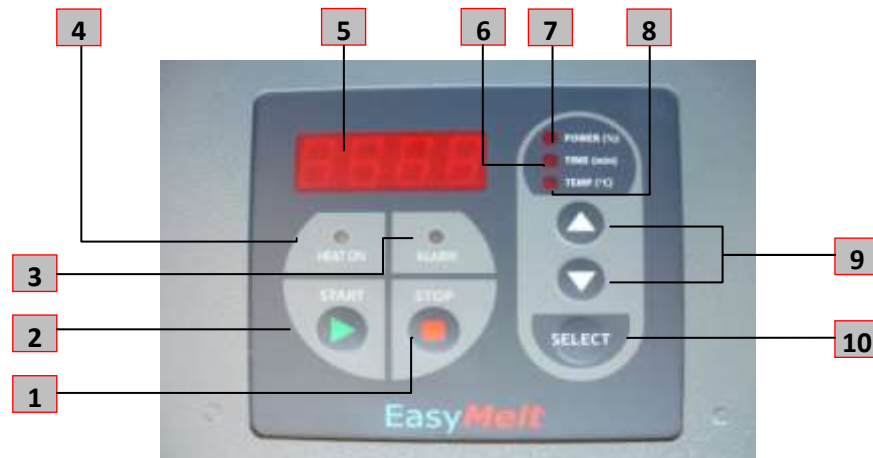


Figure 2.7 UPT-016-550-01/02/03/04 Control Panel Layout and Controls

Table 2.6 Control Panel Components

Nº	Name/Function	Description	Indicator/Control
1	"Stop" Button	"Stop" Button – dual function - Stops the heating cycle. when the device is in "Heat on" state - Resets any faults. when the system is in "Alarm" state	CONTROL
2	"Start" Button	"Start" Button – activates the heat cycle	CONTROL
3	LED [Red]	Illuminate when the system is in "Alarm" state	INDICATOR

4	LED [Green] - when generator is heated ON	LED [Green] - Illuminated when HF generator is heated ON	INDICATOR
5	4 Large 7 segment LEDs display	4 Large 7 segment LEDs display: <ul style="list-style-type: none"> - Output set point (%) - Timer (min) or "OFF" - Temperature (°C) - Inverter current (Arms) - Inverter output voltage (V rms) - Inverter output power (kW) - Output frequency (kHz) 	INDICATOR
6	LED [RED] - timer status	LED [RED] - Illuminated when Indicator 4 shows timer status	INDICATOR
7	LED [RED] - output set point in %	LED [RED] - Illuminated when Indicator 4 shows output set point in %	INDICATOR
8	LED [RED] - output set point in %	LED [RED] - Illuminated when Indicator 4 shows output set point in % in °C	INDICATOR
9	"UP" and "DOWN" arrow buttons	"UP" and "DOWN" arrow buttons – dual function <ul style="list-style-type: none"> - changing value of parameters - scrolling through the menus 	CONTROL
10	"SELECT" button	"SELECT" button: <ul style="list-style-type: none"> - scrolling through the parameters. entering menus and confirming parameter's value 	CONTROL

2.3.3 REGULATION MODES AND SYSTEM STATUSES

Device works in power regulation mode only.

2.3.4 MENUS AND NAVIGATION

2.3.4.1 Main Menu Navigation

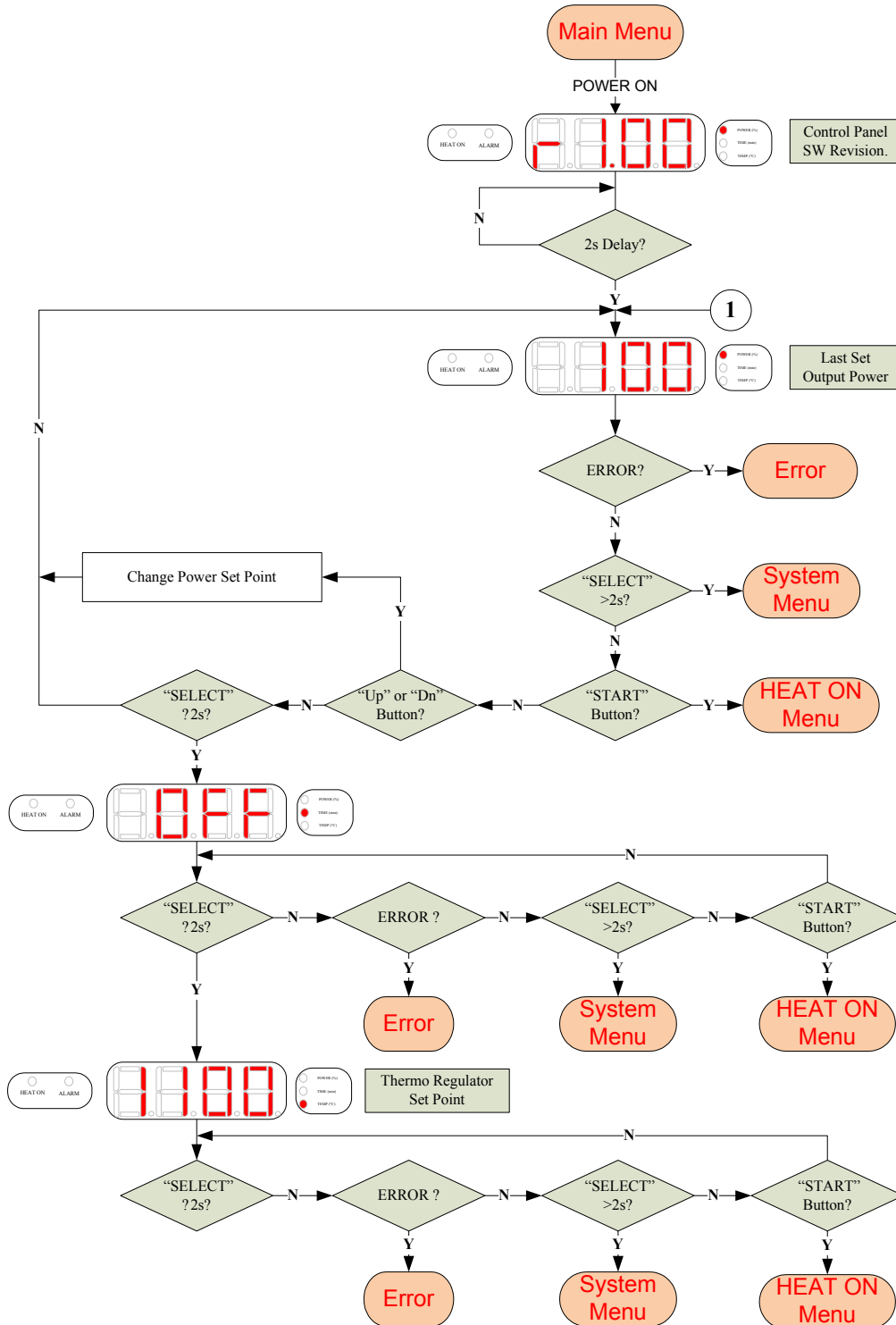


Figure 2.8 Main Menu Structure

2.3.4.2 Heat ON Menu Navigation

HEAT ON Menu is accessible from Main Menu. by pressing “START” button. It is shown on **Figure 2.9**.

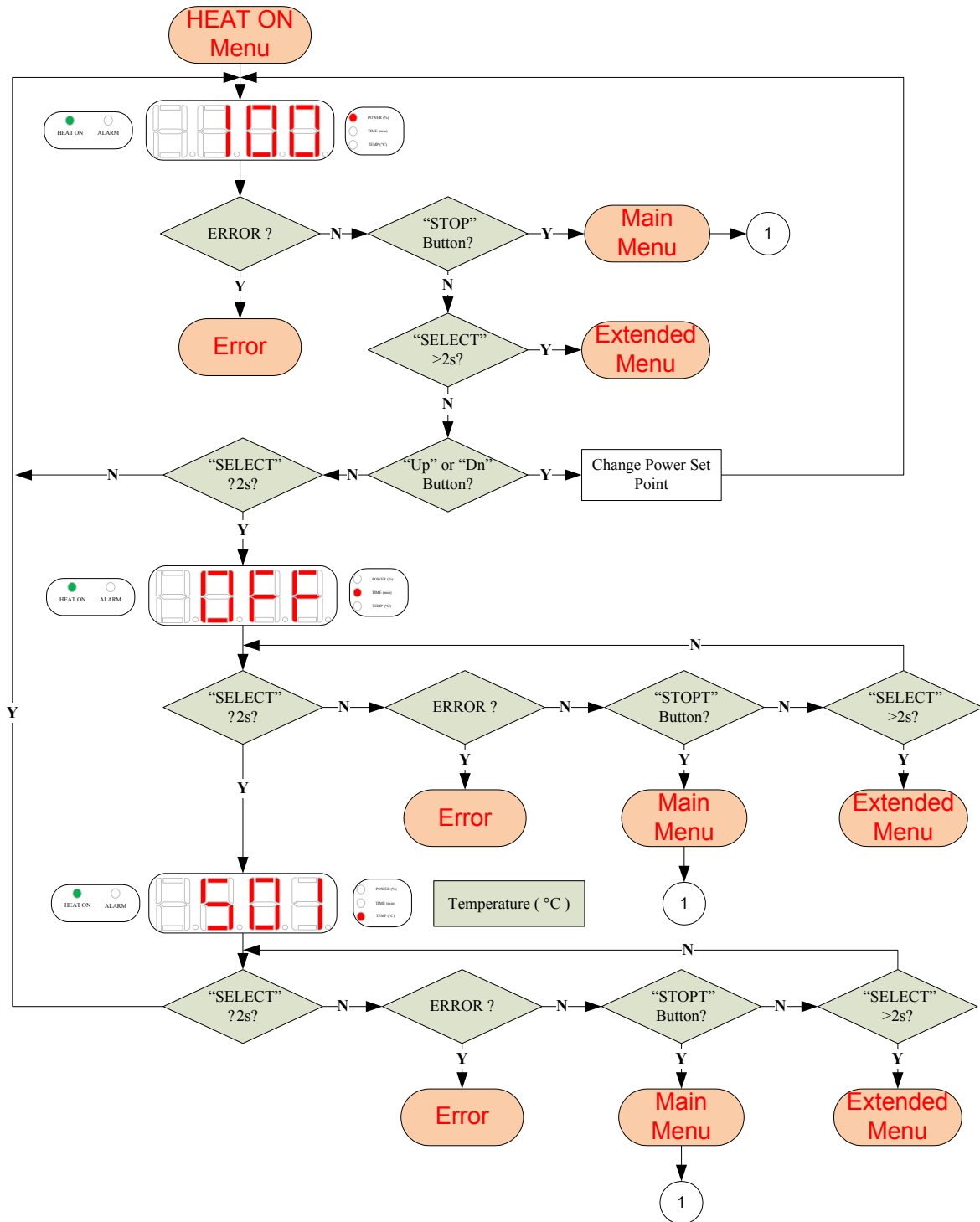


Figure 2.9 HEAT ON Menu Structure

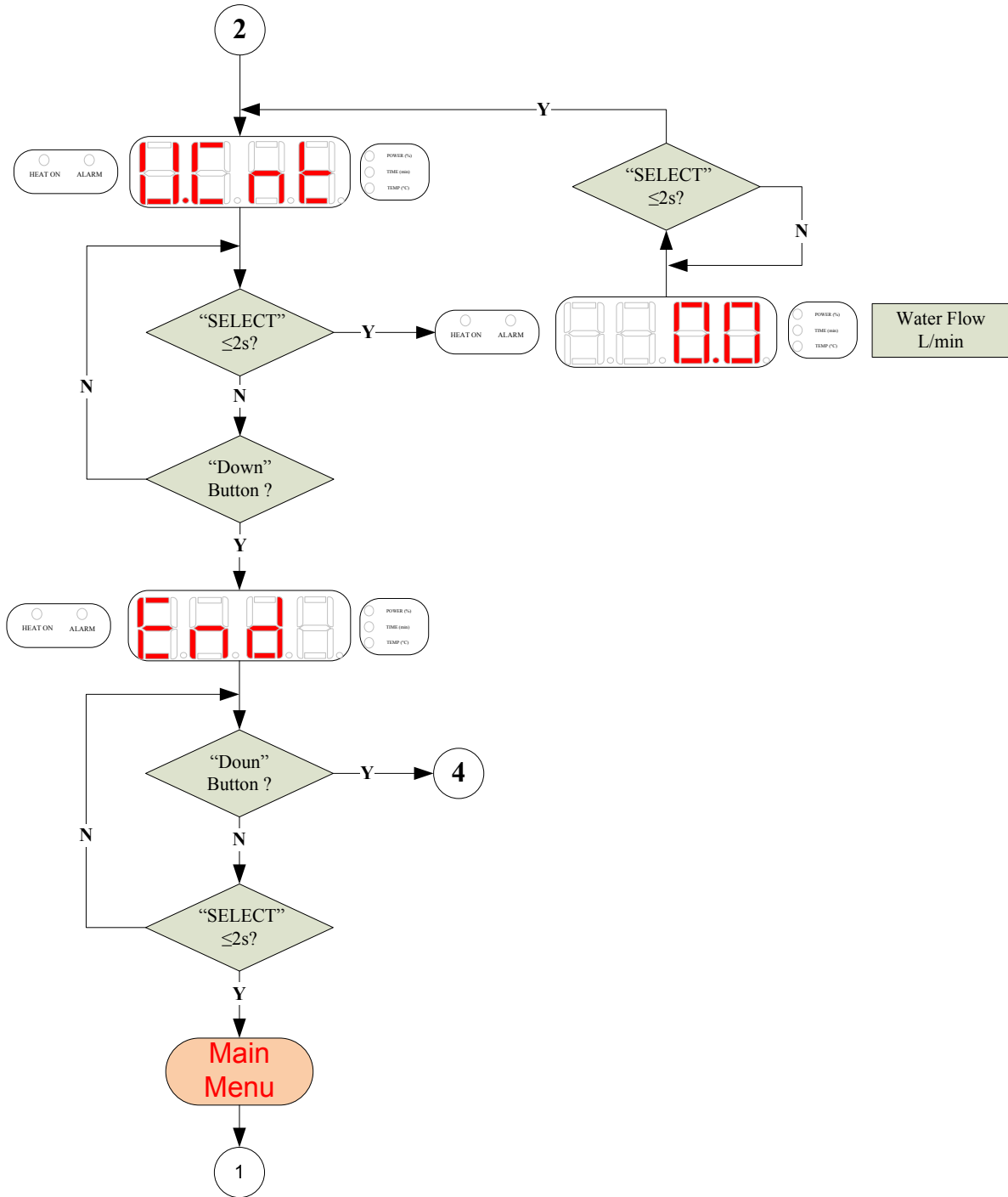
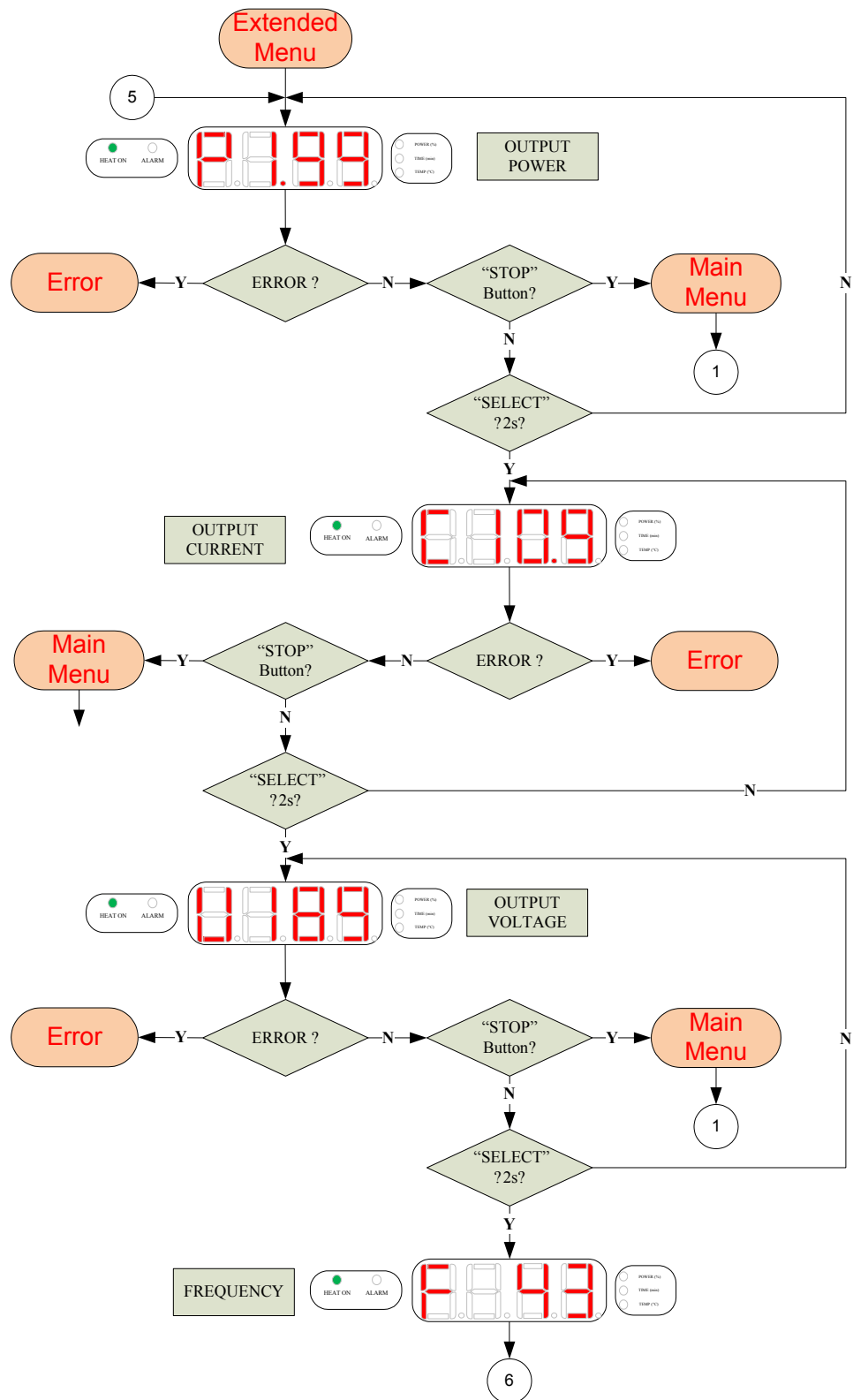


Figure 2.10 SYSTEM Menu Structure

2.3.4.4 EXTENDED MENU Navigation

EXTENDED MENU is accessible from **Heat ON** Menu. by pressing “SELECT” button. For 2seconds. It is shown on **Figure 2.11**. This menu allows additional basic inverter parameters to be shown – power. current. voltage. frequency.



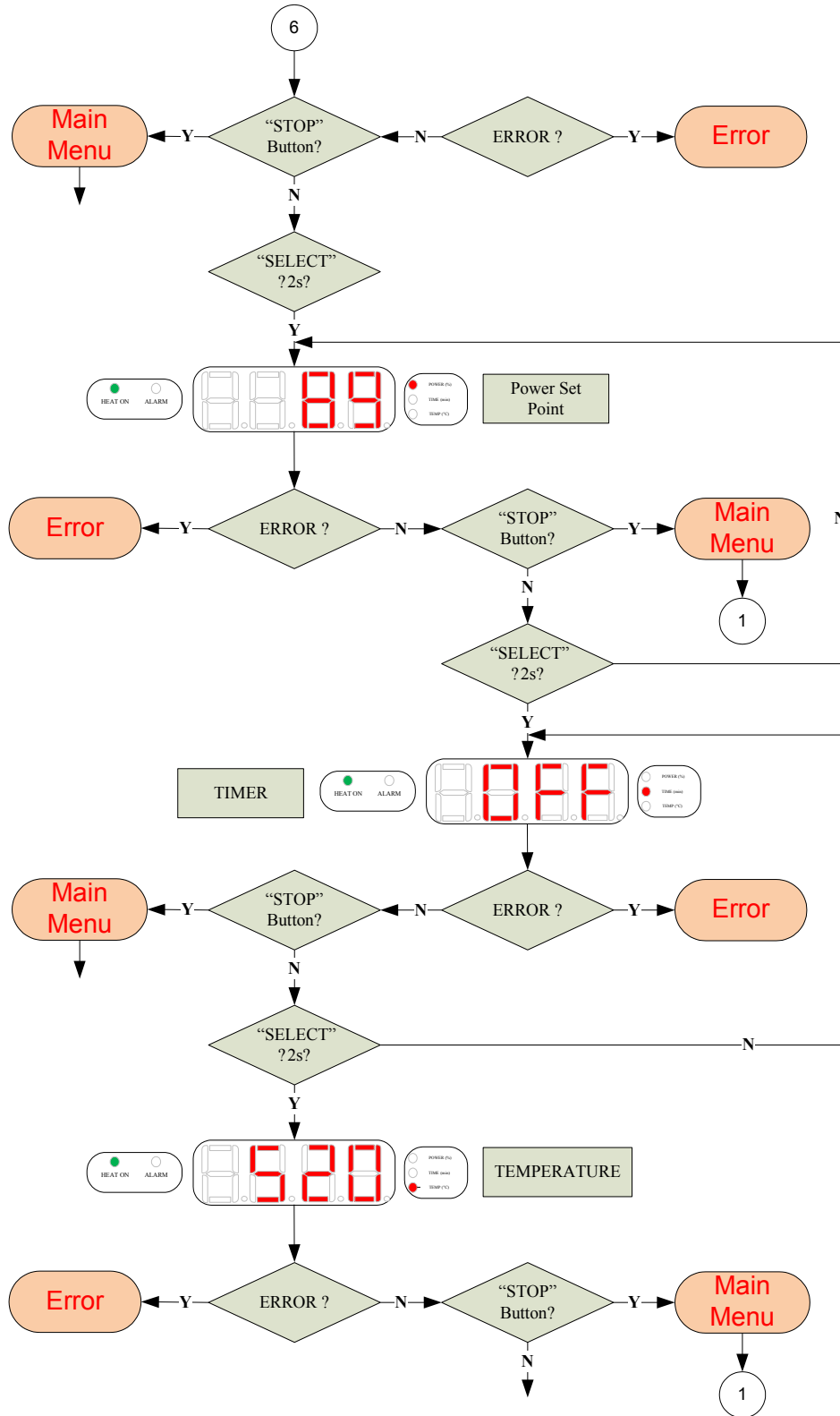


Figure 2.11 EXTENDED Menu Structure

2.3.5 CONTROL MODES

Control Modes of Operation

There are two control modes of operation:

[Auto] – In this mode device automatically holds up previously set temperature of the crucible. In this mode thermo regulator is switched ON (see Fig.2.10).

[Manual] – In this mode it is supposed that there is not thermocouple mounted. Thermo regulator is switched OFF (see Fig.2.10) and operator has to watch crucible temperature.

Note: When thermo regulator is switched OFF, the parameter “TEMPERATURE” is invisible on the 7 segment LED display.

3 TUNING AND TROUBLESHOOTING

3.1 LOAD TUNING GUIDE

Because of fixed tank circuit and load (graphite crucible) device is factory tuned and doesn't need additional load tuning.

3.2 ALARMS, FAULTS AND WARNINGS

For every ERROR which appears during normal working of the device. is valid flowchart shown on Fig.3.1.

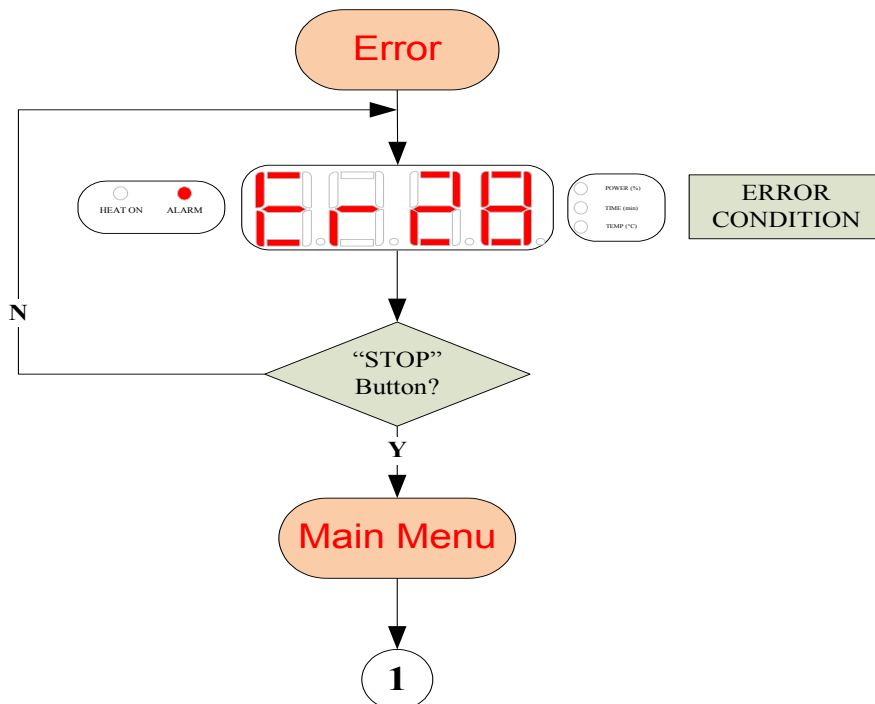


Figure 3.1 – ERROR Menu Flowchart

Table 3.1 Alarms and Fault Messages

<i>Flt. №</i>	Fault Description	Condition	Cause	Advice
<i>Er1</i>	Tuning Fault (Phase Fault)	Primary V & I out of phase	Can't find resonant frequency	Check resonant loop connections - load coil. tank capacitors. Transformer taps. Possible inverter board Part Number MOD-016-210 failure.
<i>Er2</i>	Current Fault	I primary > I Max	Output current exceeds the limit	Possible FET/IGBT failure in the Power supply. Contact our Service department
<i>Er3</i>	Frequency Fault	$F < F_{min}$ or $F > F_{max}$	Frequency goes out of the pre-programmed range during Heat On	Check resonant loop values. tank capacitors or control board. Check load coil for shorted turns.
<i>Er4</i>	PS Over Temperature	$T^{\circ}\text{heat sink} > 60^{\circ}\text{C}$	The heat sink of the power supply exceeds the max allowed T°	Check fans. blockages of the vents or fan filters. Cooling water temperature or water filters.
<i>Er5</i>	Auto tune fault	Appearance only in service mode after sweeping	Can't find resonant frequency, or the frequency is out of range.	Check resonant loop connections - load coil. tank capacitors. Transformer taps. Possible inverter board Part Number MOD-016-210 failure.
<i>Er9</i>	Communication Fault	Communication Error Between Panel and Control Board	No acknowledgment is received after the last command	Check cables and RS connectors between boards
<i>Er28</i>	Water Flow Fault	Water Flow < 2 l/min (0.5GPM)	Restricted or no water flow	Check cooling water flow rate and water pressure. Check hoses and external water filter for blockages. Check flow switch.
<i>T Hi</i>	Crucible Temperature Over Regulation	Temp. of the Crucible is 150°C higher than Thermo regulator Set Point	Damaged thermocouple or thermocouple connections	Check Thermocouple and Thermocouple cables and connections

3.3 SERVICE

3.3.1 GENERAL

If for some reason the unit fails in the field it is advisable that the unit be serviced by the manufacturer or its authorized service representative. Should that happen, please contact us immediately (see contact information in Section 3.3.2). Please have the following information about your unit available upon calling:

1. Unit Model and Revision (located on the label on the back of the unit);
2. Unit's Serial Number (located on the label on the back of the unit);
3. Line Voltage and frequency;
4. Detailed description of the problem encountered including – load, ambient temperature at the time of the failure;
5. Detailed description of the actions taken;
6. Approximate time in service;

If our technical staff is unable to help you over the phone, then a repair authorization number (RA#) will be issued for you. With this number enclosed in your return package you can ship the unit back for repair or request a service engineer to repair the unit on site.

3.3.2 SERVICE CONTACT INFORMATION

For technical service questions, please call:

Europe and Asia: + 359 2 480 1900

USA and Canada: + 1 631 467 6814

You may also fax your questions or request:

Europe and Asia: + 359 2 480 1910

USA and Canada: + 1 631 980 4065

Or e-mail us at: support@ultraflexpower.com

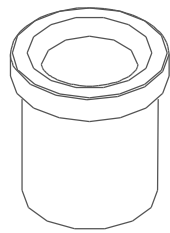
You can also send your request through our [web site](#).

Note: Please, include your contact information so that you can be easily reached if necessary.

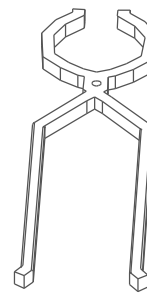
Appendix A: ACCESSORIES

Table Appendix A: Accessories Table

№	Part Number	Description	Easy Melter		
			UPT-016-550-01	UPT-016-550-02	UPT-016-550-04 UPT-016-550-03
1	2DET-016-000-KB	1 kg gold Graphite Crucible	1	-	-
2	2DET-016-000-KC	2 kg gold Graphite Crucible	-	1	-
3	4HVM-000-102-00	Crucible tong	1	1	-



a)



b)

Fig. Appendix A - Accessories

Revision Table:

№	Ver.	Date	Remark	Create/Change by:
1	3.0	07.2013	New Electronic Assembly	L.Mihova